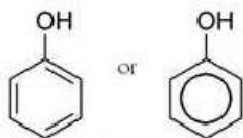
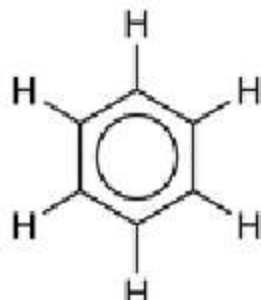
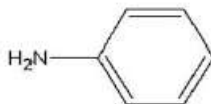


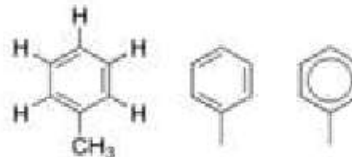
BENZENE
and derivatives



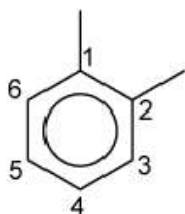
PHENOL



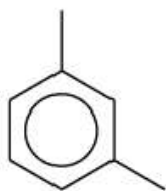
ANILINE



TOLUENE



1,2-dimethylbenzene
(*ortho*-xylene)

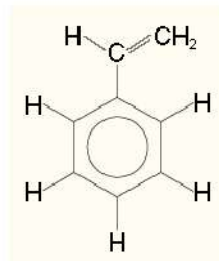


1,3-dimethylbenzene
(*meta*-xylene)

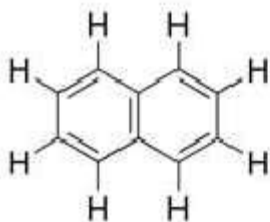


1,4-dimethylbenzene
(*para*-xylene)

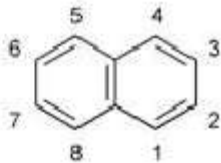
XYLENE



STYRENE



NAPHTHALENE



ANTHRACENE